



© Alexander – stock.adobe.com



© Peter Hinschläger

## Explanation of terms

### City Council:

An assembly of elected local politicians. They discuss and decide about life together in the city and about important topics like traffic, education, the environment, the local economy or culture.

### City Councillor:

A member of the City Council, in other words a local politician who is elected by the citizens of the city.

### Enquiry:

A question about the current state of a situation, e.g. „How many kindergarten places are there in the city?“ Or a question about what the City Council is planning. An enquiry can be submitted in writing or in person.

### Request:

When you ask the City Council to do something, e.g.: „We request that you set up a bilingual kindergarten,“ or, „We request that you organise and offer more language courses for working people.“

### Natural multilingualism:

When a child grows up with several languages and learns them all naturally.

## Contact

### Advice Office of the Integration Council in the „Nadelfabrik“

Reichsweg 30  
Room A002  
52068 Aachen  
Tel.: 0241 432-56602  
integrationsrat@mail.aachen.de  
www.aachen.de/integrationsrat

To make an appointment, call  
Tel.: 432-56602 or send an email to  
integrationsrat@mail.aachen.de

### The state association of the 107 Integration Councils in North Rhine-Westphalia is the

„Landesintegrationsrat NRW“  
info@landesintegrationsrat-nrw.de  
www.landesintegrationsrat.nrw

 Printed on 100% recycled paper

**The City of Aachen**  
The Lord Mayor  
Department of Housing, Social and Integration Affairs  
Office of the Integration Council  
Reichsweg 30  
52068 Aachen

[www.aachen.de](http://www.aachen.de)




© christianchan – stock.adobe.com

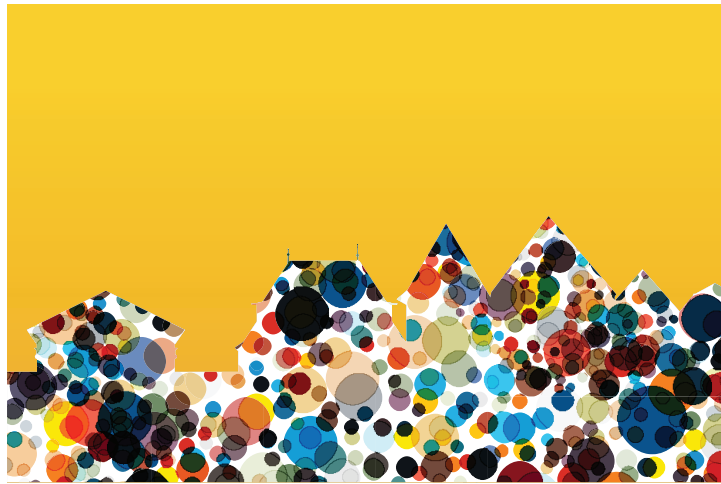
## Integration Council Aachen

Growing together  
in our city.

[www.aachen.de/integrationsrat](http://www.aachen.de/integrationsrat)

Landesintegrationsrat  
NRW 

**stadt aachen**  

## The Integration Council protects your interests

There are about 255,000 people living in Aachen.

A third of them have an international background. They originate from over 160 different countries. And they bring a colourful variety of different languages, cultures and religions to the city. The Integration Council gives these people a voice.

Aachen is your home. The Integration Council protects your interests, for example with respect to

- **housing and living conditions**
- **access to schools and employment**
- **experiences with marginalisation and racism**

If you have any questions, please contact your Integration Council!

Please note: the Integration Council is not there to solve the problems of individual persons. Its primary mission is to represent and protect the interests of all naturalised persons and persons with a migration background in our city.



## What is the Integration Council?

The Integration Council is a committee that is democratically elected. It is a part of the city's urban policy. In the Integration Council, members of the City Council\* work together with naturalised persons and representatives of persons with a migration background. Their goal is generally to promote good coexistence in the city. But most of all it is to give you a political say in all aspects of your life! In other words, the Integration Council is there to make sure that your voice is heard.

In Aachen the Integration Council has 21 members. Persons with a migration background living in the city elect 14 representatives to be their members on the Integration Council. The City Council\* designates seven City Councillors\*, who belong to the different political parties in the City Council. The Integration Council holds new elections every five years. The election of the Integration Council usually takes place on the same day as the local government elections. The participation of the City Councillors ensures that the resolutions of the Integration Council are brought to the attention of the city's urban policy makers. This can be achieved, for example, by submitting enquiries\* and requests\* to the City Council. Furthermore, the City Council is obliged to give a hearing to the Integration Council on certain specific topics.

Do you want to know how you can have your political say in your city? Would you like to watch a public session of the Integration Council? Then please feel free to contact us!

\* Explanations of these terms are given towards the end of this flyer.



## Possible issues and concerns

Integration applies to all areas – to schools and to the world of work, to free time activities and to life in your part of town. The Integration Council is committed to building a community where Germans and persons with a migrant background live together as equals. Its goal is to promote and encourage tolerance and respect on all levels of political life. Possible issues and concerns include the following, for example:

- **political participation**
- **education**
- **employment**
- **social & cultural participation**
- **measures to counter racism and discrimination**
- **integration of refugees**
- **promotion of „natural multilingualism“\***